

VLTZ-X GO 10

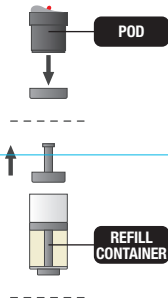
User Manual

The VLTZ-X GO 10 is a rechargeable battery that can be used with the VLTZ-X GO 10 refill.



Preparing VLTZ-X GO 10 for use

- Remove the battery from all packaging.
- Remove the refill from all packaging, including any protective caps or stickers from both the 2ml pod and 8ml refill container.
- Connect the pod to the refill container, you will hear an audible click.
- Invert the connected pod and refill container, and insert into the battery.
- Attach the mouthpiece and the VLTZ-X GO 10 is ready to use.



Vaping

Inhale gently on the mouthpiece and the device will begin to produce vapour. The LED on the front of the device will illuminate whilst vapour is being produced. Most vapers find that drawing vapour gently into the mouth, and then fully inhaling after removing the mouthpiece from their mouth, gives the greatest nicotine satisfaction with this type of device.

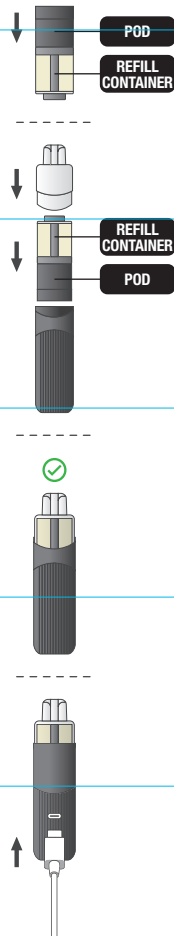
Note: A slight burnt taste or general loss of flavour indicates the e-liquid in the pod and refill has been consumed.

Charging the battery

The VLTZ-X GO 10 requires charging, generally on a daily basis, but dependent on use. A newly charged battery will provide sufficient power for almost 30% of the e-liquid provided. To charge the battery, connect the VLTZ-X GO 10 to a suitable USB power supply using an appropriate USB-C cable. When charging, the LED on the front of the device will glow white, once fully charged it will turn off.

Changing the refill

When the e-liquid in both the pod and refill container are consumed, they should be removed and replaced. Remove the mouthpiece by pulling upwards, then remove the refill. Follow the steps outlined in "Preparing VLTZ-X GO 10 for use" to fit a new refill.



TOTALLY  WICKED

Cleaning the VLTZ-X GO 10

Clean the VLTZ-X GO 10 using a soft dry cloth or tissue; care should be taken to avoid direct contact with water. Clean the pod connection point in the battery carefully using a dry cotton swab.

Device care instructions

The VLTZ-X GO 10 is a long-lasting rechargeable vape, but the refill needs to be replaced. The battery can be recharged many times, and should only need replacement when its charge life diminishes substantially.

Contents

1 x VLTZ-X GO 10 battery
1 x Mouthpiece
1 x User manual

Specifications

Dimensions: 117mm x 28mm x 31mm
Battery capacity: 600mAh
Weight (excluding refill): 44g
Max charging current: 0.5A

Additional product information

There are no reported medical side effects with this product. If you believe you experience a side effect, please contact the manufacturer.

Safe product disposal

Vapes should never be disposed of in general household waste. Instead, they need to be recycled in line with waste regulations. To correctly dispose of a vape battery, visit your local vape store to see if they have a collection point (available at all Totally Wicked stores), or check with your local council to see if there is specific disposal available at your local waste treatment facility.

Product storage, charging and battery precautions

- Store the VLTZ-X GO 10 and its accessories away from children when not in use.
- The VLTZ-X GO 10 is intended to be charged using a certified USB charger with a rated output of 5V dc, 0.5A minimum, or a certified host computer using USB 2.0 or higher. A suitable charger is available from all dedicated Totally Wicked stockists.
- Unplug the battery from the charging device as soon as it is fully charged.
- Do not leave battery unattended when on charge.
- Do not charge the battery close to flammable materials or valuables.
- Do not charge the battery in a damp environment, or in temperatures under 0°C or above 45°C.
- Do not use the device in temperatures under -10°C or above 60°C.
- Please dispose of dead batteries in accordance with your country's appropriate legislation.
- Do not carry batteries in a pocket or bag with metallic objects.
- Do not attempt to repair a faulty VLTZ-X GO 10 battery as these are sealed units with no serviceable parts. Attempted repairs will void the warranty.

Warranty

The VLTZ-X GO 10 battery comes with a 6-month limited warranty. Should the product fail due to any defect in manufacture or materials, please get in touch. We will require you to return a faulty product to our headquarters before issuing a replacement, complete with dated proof of purchase.

Manufacturer

Shenzhen RELX Technology Co.,Ltd.
No.9, Jian'an Yi Road, Shenzhen, 518101 China.

Manufactured in China under the authority
of Pillbox38 (UK) Ltd, Stancliffe Street,
Blackburn, Lancashire, BB2 2QR.
UK Tel: 01254 692244
www.totallywicked.co.uk

