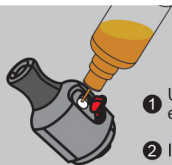




## E-liquid Refilling



1. Unplug the filler plug to expose the fill port
2. Inject e-liquid into the pod

## Adjusting Airflow

Twisting the airflow control knob



## English

### Notice for Use

Thank you for choosing Eleaf products! Please read this manual carefully before use so as to use correctly. If you require additional information or have questions about the product or its use, please consult your local distributors, or visit our website at [www.eleaf-world.com](http://www.eleaf-world.com).

For more detailed instructions, please find tutorial video at: [www.eleafworld.com/video](http://www.eleafworld.com/video)

### How to Use

#### Assembling:

1. Pull out the pod from the mod.
2. Take out the GTL coil from the box, drip a few drops of e-liquid directly into the coil to make it fully saturated before first use, and insert the primed coil into the pod.
3. Unplug the filler plug on the top of the pod to expose the fill port as shown in the above pictures. (Note: the other end of the filler plug is fixed. Please do not attempt to completely remove the filler plug.)
4. Slowly inject e-liquid into the pod, and plug the filler plug back after filling.
5. Insert the pod back onto the mod.
6. Adjust the airflow by twisting the airflow control knob.

**Power on/off:** Press the fire button 5 times in quick succession within 1.5 seconds to turn on or off the device.

**Adjusting wattage:** In power-on state, Press the fire button 3 times to enter wattage adjustment mode, press the + or - button to increase or decrease the wattage. Keep holding down the + or - button without looseness to increase or decrease the wattage quickly.

**Wattage Recommendation and Memory Function:** When a coil is detected by the device, the device will recommend the best wattage for the coil according to the resistance of the coil. The wattage is also freely to be adjusted by pressing the + or - button for your preference. The device will remember your usual wattage setting for the same resistance after you vape with it for at least twice in a row.

**Vaping:** In power-on state, keep holding down the fire button to inhale, and release the button to stop inhaling.

**Charging:** The device can be charged through USB type-C port via a wall adapter or a computer.

**Adjustment buttons lock/unlock:** In power-on state, keep pressing down + button and - button simultaneously for two seconds, the + and - buttons will be locked and the screen will display "LOCK". In the same way, the + and - buttons can be unlocked and the screen will display "UNLOCK".

### Properties and Protections

**Resistance Range:** 0.2Ω-3.0Ω

**Over-time Protection:** Every time when vaping time exceeds 10 seconds, the screen will display "PUFF TIMEOUT" and the output cuts off automatically.

**Short Circuit Protection:** When short-circuit occurs, the screen will display "ATOMIZER SHORT".

**No Atomizer Alert:** If the device detects no atomizer, the screen will display "NO COIL".

**Low Voltage Protection:** When the voltage of the device is lower than 3.3V, the screen will display "BATTERY LOW" and there is no output when vaping. Charge the device to reactivate it.

### Warranty

Please refer to the Warranty Card.

### Warnings

1. Please keep out of reach of children.
2. This product is not recommended for use by young people, non-smokers, pregnant or breast-feeding women, or persons who are allergic/sensitive to nicotine.

### Contra-indication

1. Do not attempt to repair the product by yourself as damage or personal injury may occur.
2. Do not leave the product in high temperature or damp conditions, otherwise it may be damaged. The proper operating temperature for the device is -5°C ~ 50°C and the proper charging temperature is 0°C ~ 50°C.
3. Do not use this product for other purposes except only for vaping and don't swallow the e-liquid.

### Possible Adverse Effects

1. This product may be hazardous to health and can contain nicotine which is addictive.
2. For people with adverse reaction after using this product, it is recommended to use the e-liquid with lower nicotine content or no nicotine.

Email: [service@eleafworld.com](mailto:service@eleafworld.com)

Web: [www.eleafworld.com](http://www.eleafworld.com)

Facebook: [www.facebook.com/EleafWorld/](https://www.facebook.com/EleafWorld/)

Instagram: [www.instagram.com/eleafglobal/](https://www.instagram.com/eleafglobal/)

