



TOTALLY WICKED®

inva1

ELECTRONIC CIGARETTE KIT

USER MANUAL

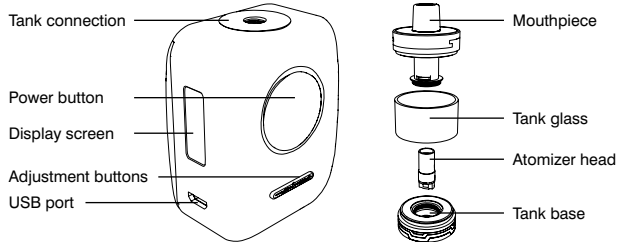
CONGRATULATIONS ON PURCHASING YOUR
TOTALLY WICKED RIVAL
ELECTRONIC CIGARETTE

If you are familiar with using e-cigarettes, follow the quick start guide to be vaping in minutes.

- Prime the atomizer head.
- Fill the tank.
- Switch the Rival on (5 clicks of the power button).
- The Rival will automatically set to 15 watts.
- Press and hold the power button and inhale.
- Charge the battery (possibly not shipped with a full charge).

Detailed descriptions of these steps and more are given in the following pages of this manual.

THE TOTALLY WICKED RIVAL



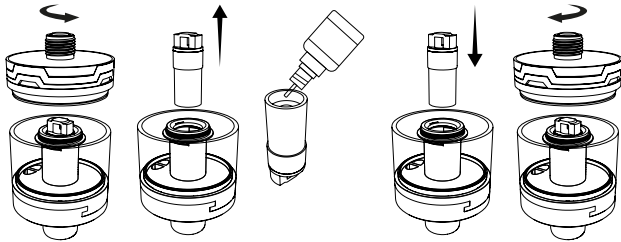
PRIMING THE ATOMIZER HEAD

It is important to “prime” a new atomizer head before first use. Failure to do so can cause the atomizer coil to overheat, resulting in a burnt taste and sometimes irreversible damage to the atomizer head requiring early replacement.

Unscrew and remove the tank from the battery and invert. Unscrew the base of the tank, grip the atomizer head by its connector, and remove it from the tank by pulling straight out. Prime the atomizer head by dripping a few drops of E-liquid

into the central hole of the atomizer head. After priming the atomizer head, insert it back into the tank, screw the base back on, and screw the tank back onto the battery.

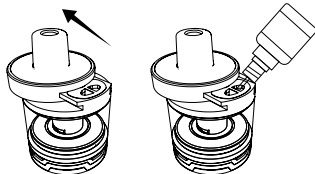
PRIMING THE ATOMIZER HEAD



FILLING THE TANK

Slide the top cap open by pushing firmly in the direction indicated by the arrow on the top cap to expose the fill hole. Insert the filling nozzle into the fill hole and fill the tank, being careful to leave an air gap of approximately 2mm. Slide the top cap shut after filling.

Note: After priming a new atomizer head and filling the tank with e-liquid, it is recommended to wait 5 minutes to ensure the atomizer head is fully saturated with e-liquid.



USING YOUR RIVAL

Atomizer Head Lifespan

Atomizer heads do not last forever and need to be periodically replaced. The lifespan of an atomizer head can vary from several days up to several weeks. Factors affecting lifespan include wattage, vaping style, flavour and type of e-liquid. Indicators that the atomizer head may require replacement include a slight burnt taste, general loss of vapour production or a reduction in flavour intensity.

Switching On and Off

Switch the Rival on by quickly pressing the power button five times, the screen will display "RIVAL BY TOTALLY WICKED" indicating the Rival has been switched on. Quickly press the power button five times to switch the Rival off, the screen will display "SLEEP MODE" indicating the device has been switched off.

USING YOUR RIVAL

Setting the Wattage

The Rival has adjustable wattage that can be set from 1 – 60 watts. Use the left or right adjustment buttons to increase or decrease the wattage on the battery. The fitted atomizer head can be used from 8-16 watts. For the best balance of flavour and vapour production we suggest a starting point of 8 watts, which you can then adjust in small increments to find your favourite setting.

Vaping

Press and hold the power button as you inhale the vapour, the LED surrounding the button will light up while the power button is held down.

Adjusting Airflow

If you find the air flow too airy or too tight while vaping, rotate the airflow control ring located on the tank base. Experiment by rotating the air flow control ring to find your preferred setting.

USING YOUR RIVAL

E-liquid Level

To prevent the atomizer head from becoming dry and burning prematurely, ensure the amount of e-liquid inside the Rival tank does not drop below the fluid feed holes located on the sides of the atomizer head.

Charging the Battery

The Totally Wicked Rival is charged by connecting the charge port on the battery to a USB port or suitable wall adaptor with the supplied charging lead. The battery icon will begin to flash onscreen for 15 seconds, after which the screen will switch off. The LED surrounding the button will start to flash in 5 second intervals with a 1 second break between flashes. Once fully charged the LED surrounding the button will stay illuminated until taken off charge.

USING YOUR RIVAL

Battery Life Indicator

In addition to the on screen battery life indicator, battery life is also indicated by the colour of the LED that is illuminated around the power button, as described in the following table.

Battery Level	LED Condition
100%-60%	Glows WHITE for 3 seconds
59%-21%	Glows BLUE for 3 seconds
20%-0%	Glows RED for 3 seconds

Replacing the Atomizer Head

To install a new atomizer head follow the process shown in the *"Priming the atomizer head"*.

Reminder: After priming a new atomizer head and filling the tank with e-liquid, it is recommended to wait 5 minutes to ensure the atomizer head is fully saturated with e-liquid.

ONSCREEN MESSAGES

Atomizer Head Protection

If the power button is held down for longer than 10 seconds while vaping, the screen will display "OVER TIME" and the Rival will not continue to power the atomizer or produce any vapour. Releasing the power button will allow normal operation to resume.

Low Battery

If "LOW BATTERY" is displayed onscreen, this indicates the Rival has insufficient battery voltage to deliver the currently selected wattage; the LED surrounding the button will flash 4 times. Charge the battery using the steps outlined in "Charging the Battery" to allow normal operation to resume.

ADDITIONAL SETTINGS

Locked Mode

Locked mode prevents accidental firing of the Rival. If Locked mode is enabled, the screen will display “Locked” whenever any button is pressed. Pressing any button on the Rival won’t have any effect until “Locked Mode” is disabled.

To turn “Locked Mode” on/off, ensure the Rival is switched on, then press and hold down both adjustment buttons at the same time; the screen will display “Locked” when enabled. Repeat the process to disable

locked mode; the screen will display “Unlocked” when disabled.

Automatic Wattage

The Totally Wicked Rival is equipped with an “automatic wattage” feature. This feature allows the device to automatically set the wattage when connecting a new atomizer. For example, when using the 1.5ohm atomizer which comes fitted in the tank, the Rival will automatically set the power to 15W.

PROTECTIONS

Short Circuit Protection

If an atomizer short circuit occurs, the screen will display “SHORT”, the Rival will not provide power to the atomizer or produce any vapour and the LED surrounding the button will flash red 4 times. Replacing the atomizer head should allow normal operation to resume. To replace the atomizer head follow the steps outlined in “*Replacing the atomizer head*”.

No Atomizer Detected Protection

If no atomizer is detected, the screen will display “No Atomizer” and the Rival will not provide power to the atomizer or produce any vapour, the LED surrounding the button will flash blue 4 times. Ensure the atomizer head is fully pushed into the base of the tank, then fit the tank back onto the battery. If the “No Atomizer” message continues, replacing the atomizer head should allow normal operation to resume. Follow the steps outlined in “*Replacing the atomizer head*”.

CLEANING AND MAINTENANCE

The Totally Wicked Rival battery can be cleaned by wiping down with tissue or a dry cloth. The Rival tank can be cleaned by removing it from the battery, unscrewing the tank base from the glass section of the tank then removing the atomizer head.

The entire Rival tank and base can now be cleaned under hot running water. Allow the tank to fully dry before refitting the atomizer head into the tank base. Reassemble the tank.

Note: Do not attempt to clean the atomizer head with water. Do not submerge the Rival battery unit in water or allow it to get wet.

Additional Product Information

There are no reported medical side effects with this product. If you believe you experience a side effect, please contact the manufacturer.

SPECIFICATIONS

Rival Battery

Dimensions: 66mm (height) x 50.7mm (width) x 31mm (depth)

Weight: 143g

Battery Capacity: 3200mAh

Wattage Range: 1 – 60W

Voltage Range: 1.0 – 8.5V

Maximum Charge Current: 2.0A

Maximum Tank Diameter: 25mm

Thread Type: Spring Loaded 510

Connection

Atomizer Resistance Compatibility:

0.15ohm – 3.0ohm

Rival Tank

Dimensions: 22mm (diameter) x 34mm (height)

Weight: 33g

Tank Capacity: 2.0ml

Atomizer Type: SW

Thread Type: 510 Connection

Atomizer Head Resistance: 1.5ohm

Airflow Type: Bottom – Bottom, adjustable

Maximum Refill Nozzle Diameter: 3.7mm

PRODUCT STORAGE AND BATTERY PRECAUTIONS

- Store the Rival e-cigarette and its accessories away from children whilst not in use.
- Please only use the charging cable provided.
- Please dispose of dead batteries in accordance with your country's appropriate legislation.
- Do not charge the battery in a damp environment, or in temperatures under 0°C or above 45°C.
- Do not use the device in temperatures under -10°C or above 60°C.
- Do not carry batteries in a pocket or bag with other metallic objects.
- Do not attempt to repair a faulty Rival battery as these are sealed units with no serviceable parts. Attempted repairs will void the warranty.

WARRANTY

Totally Wicked Rival components have a 28-day parts warranty with the exception of atomizer heads which are consumable items and are covered by our 'Dead on Arrival' warranty only. The USB cable supplied has a 12-month warranty. If any parts are found to be faulty within this time please contact our customer service team, whose details are on the back page of this booklet and we will arrange for a replacement. We may require the goods to be returned for further investigation.

KIT CONTENTS

- 1 x Rival battery
- 1 x Rival tank
- 1 x Spare glass
- 1 x SW 1.5ohm atomizer head (fitted)
- 1 x SW 0.8ohm atomizer head (spare)
- 1 x User manual
- 1 x Spare parts set

PiLLbOX 38

nival

Manufactured in China
under the authority
of Pillbox38 UK Ltd,
Stancliffe Street,
Blackburn, Lancashire,
BB2 2QR.



Tel 01254 692244
www.totallywicked.co.uk



Tel 1(888) 761-9425
www.totallywicked.com



Tel 0941-78447082
www.totallywicked.de