



TOTALLY WICKED®

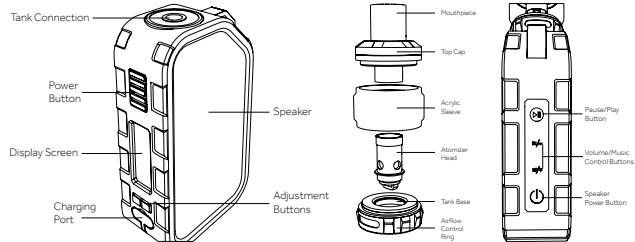
Active

USER MANUAL



CONGRATULATIONS
ON PURCHASING YOUR
**TOTALLY WICKED
ACTIVE
ELECTRONIC
CIGARETTE KIT**

THE TOTALLY WICKED ACTIVE



QUICK START GUIDE

For those familiar with e-cigarettes, the steps below can be followed to allow the device to be used in the shortest possible time:

- Prime the atomizer head
- Fill the tank
- Switch the Active on
- Set the Active to wattage mode
- Check the power setting (we suggest 15 watts with the 1.3ohm atomizer head)
- Press the power button and inhale
- Charge the battery (it may not have been shipped with a full charge)

QUICK START GUIDE (WIRELESS SPEAKER)

For those familiar with Wireless speakers, the steps below can be followed to allow the device to be used in the shortest possible time:

- Press the speaker power button – the device will begin scanning for Wireless devices
- Turn on the Wireless connection on your selected device and pair with the “ACTIVE”
- Select the music you wish to play on your selected device
- Charge the battery (it may not have been shipped with a full charge)

Detailed descriptions of these steps and more are given in the full user guide.

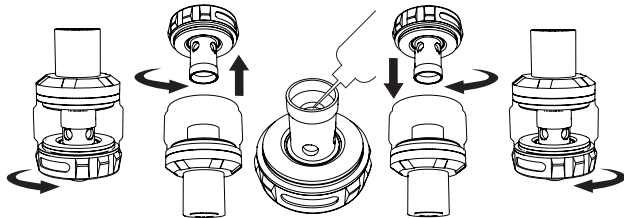
PRIMING THE ATOMIZER HEAD

Note: It is important to “prime” a new atomizer head before first use. Failure to do so can cause the atomizer coil to overheat, leading to an unpleasant taste and sometimes irreversible damage to the atomizer head requiring early replacement.

Remove the tank from the battery. Turn the Active tank upside down and unscrew the atomizer base from the clear acrylic section of the tank.

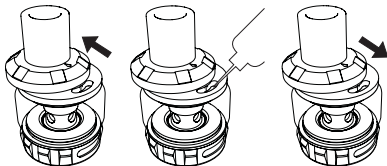
Prime the fitted atomizer head by slowly dripping e-liquid onto the cotton, avoiding dripping e-liquid directly down the centre of the atomizer head. Continue to slowly drip e-liquid onto the cotton until the cotton visible through the sides of the atomizer head appears to be saturated. Refit the atomizer base onto the clear acrylic section of the tank then screw the assembled tank back onto the Active battery. Fill the tank.

PRIMING THE ATOMIZER HEAD



FILLING THE TANK

Slide the top cap open by pushing firmly in the direction indicated by the arrow on the top cap to expose the fill hole. Insert the filling nozzle into the fill hole and fill the tank, being careful to leave an air gap of approximately 2mm. Slide the top cap shut after filling.



USING YOUR ACTIVE KIT

E-liquid Level

To avoid the atomizer head becoming dry and burning prematurely, ensure the e-liquid level does not drop below half way down the acrylic section of the tank.

Atomizer Head Lifespan

Atomizer heads do not last forever and need to be periodically replaced. The lifespan of an atomizer head can vary from several days up to several weeks. Factors affecting lifespan include wattage, vaping style, flavour and type of e-liquid. Indicators that the atomizer head may require replacement include a slight burnt taste, general loss of vapour production or a reduction in flavour intensity.

USING YOUR ACTIVE KIT

Powering On and Off

To switch the Active on, quickly press the power button 5 times. The screen will activate indicating that the device is powered on. To turn the Active off, quickly press the power button 5 times.

Setting the Mode and Wattage

The atomizer heads supplied with the Active are compatible with wattage mode only, and will not work in temperature control modes. To set the Active to wattage mode, quickly press the power button 3 times to enter the mode selection menu, the screen will display your current mode. Press either adjustment button until you have found "Wattage", press the power button once to confirm your selection. Lower

USING YOUR ACTIVE KIT

wattage settings will give a cooler and less dense vapour than higher power settings, higher power settings will produce larger clouds of vapour but too much power can lead to poor flavour, or even a burnt taste in the vapour. Experiment to find your preference.

Tip: Long pressing either of the adjustment buttons allows quicker changes to the wattage.

Vaping

Press and hold the power button as you inhale the vapour.

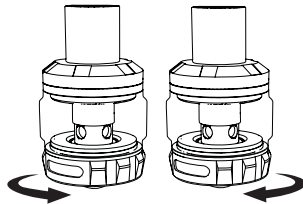
Atomizer Head Protection

If the power button is held down for longer than 10 seconds while vaping the screen will display "Over 10s protection" and the Active will refuse to power or produce any vapour. Release the power button to allow normal operation to return.

USING YOUR ACTIVE KIT

Adjusting the Airflow

If you find the airflow too airy or too restrictive while vaping, it can be adjusted by rotating the airflow control ring located on the atomizer base. Experiment to find your preferred setting.



USING YOUR ACTIVE KIT

Weak Battery Alert

If the battery cannot supply your desired wattage the screen will display “WEAK BATTERY” and the wattage will be adjusted automatically to the maximum which can be supplied. Charge the Active using the steps outlined in *Charging the Battery* below to allow normal operation to resume.

Battery Low

Once the Active battery completely depletes, the indicator on the screen will begin to flash. If the Active is used while the battery indicator is flashing, the screen will state “BATTERY LOW” pressing the button again will result in the screen displaying “BATTERY LOW LOCK!” Charge the Active using the steps outlined in *Charging the Battery* below to allow normal operation to resume.

USING YOUR ACTIVE KIT

Charging the Battery

The Active is charged by connecting the charge port located beneath the adjustment buttons to a USB port or suitable wall adaptor with the charging lead supplied. The silicone plug covering the charge port will need to be flipped down before connecting a charger. The battery indicator will display a lightning bolt while charging, and after a few minutes the screen will display an icon showing a battery being charged.

Replacing the Atomizer Head

To replace the atomizer head, remove the Active tank from the Active battery by unscrewing at the atomizer base. Turn the tank upside down, then unscrew the atomizer base from the acrylic section of the tank. Unscrew the atomizer head from the atomizer base and replace. After following the instructions in "*Priming the Atomizer Head*", reassemble the tank and screw the assembled tank back onto the Active battery.

SETTINGS

Stealth Mode

If stealth mode is enabled, the display will not activate while pressing the power button to vape. The display will still activate whenever the adjustment buttons are pressed to make changes to wattage or change modes, or if the power button is pressed briefly. To enable or disable stealth mode, ensure the Active is powered on, then press and hold the power button and left adjustment button at the same time.

The screen will display "STEALTH ON" if enabled and "STEALTH OFF" if disabled.

Key Lock Mode

Key lock mode prevents accidental changes to the wattage or temperature settings. To enable or disable key lock mode, ensure the Active is powered on, then press and hold both adjustment buttons at the same time to enable or disable key lock mode. The screen will

SETTINGS

display “KEY LOCK” when enabled and “KEY UNLOCK” when disabled. If key lock mode is enabled the screen will display “KEY LOCK” when the adjustment buttons are pressed. Adjustments cannot be made until the key lock has been disabled.

Switch between Current, Puff Counter or Total Time Vaping Displayed

Ensure the Active is powered on, press

and hold the power button and the right adjustment button. The bottom icon will begin to flash, use either adjustment button to find the icon wanted and press the power button to confirm your selection.

Note: you can reset the puff counter and total time vaping to zero by holding down both adjustment buttons while the respective icon is flashing.

SETTINGS

Bypass Mode:

Bypass mode provides an effectively direct connection between the device’s battery and the atomizer. As the battery depletes, the device supplies less power to the tank. To enter bypass mode, ensure the Active is turned on and quickly press the power button 3 times. Use either adjustment button to scroll until “Bypass” is displayed and press the power button to confirm.

Rotating the Display:

To rotate the display by 180°, turn the Active off then press and hold both adjustment buttons at the same time. Turn the Active back on.

TEMPERATURE CONTROL SETTINGS

Switching to Temperature Control Vaping Modes

Temperature Control vaping modes can be used only when specific coil materials have been used for atomizer head manufacture, generally nickel (Ni), titanium (Ti) or stainless steel (SS).

To select the appropriate temperature control mode, quickly press the power button 3 times to enter the mode selection menu; Then press either

adjustment button to cycle between the modes of wattage, bypass, temperature (Ni, Ti, SS) or temperature (M1, M2, M3). Press the power button once to confirm the selection.

Only atomizer heads with coils made from nickel, titanium or “316” stainless steel are compatible with temperature control mode. Select the appropriate mode to match your atomizer type.

TEMPERATURE CONTROL SETTINGS

Note: The atomizer heads supplied with the Active kit are compatible with wattage mode only, and will not work in temperature control mode.

Adjusting Wattage in Temperature Control/TCR Modes

The maximum wattage that is applied in Temperature Control or TCR modes can be adjusted. Higher wattages allow the target temperature to be reached quicker, while lower wattages increase

the time taken to reach the target temperature. Setting the wattage too low may prevent the target temperature from being reached at all. To adjust the maximum wattage, quickly press the power button 4 times to enter the wattage adjustment screen. Increase or decrease the wattage until the desired wattage is reached, press the power button once to confirm the selection.

TEMPERATURE CONTROL SETTINGS

Temperature Adjustment:

When in temperature control or TCR mode, use the left or right adjustment buttons to adjust the temperature from 100°C – 315°C (200°F – 600°F). Lower temperature settings give a cooler and less dense vapour. Higher temperature settings produce hotter vapour and larger clouds of vapour, but can lead to poor flavour or even a burnt taste. Experiment to find your own favourite setting.

Note: The screen displaying “TEMP PROTECT” is not an error or fault; it means the atomizer head has reached or exceeded the set target temperature.

Switching between °C and °F

Press and hold the right adjustment button to increase the maximum temperature to 315°C or 600°F, then press the right adjustment button once more. The unit of measure will switch to Fahrenheit if previously in

TEMPERATURE CONTROL SETTINGS

Celsius mode, or Celsius if previously in Fahrenheit mode. The same can be achieved by pressing and holding the left adjustment button.

New Temperature Control Atomizer Head Installation

Follow the steps outlined in “*Replacing the Atomizer Head*” above to replace and prime the atomizer head. After replacing an atomizer head in temperature control mode, the screen

may display the message “NEW COIL RIGHT, SAME COIL LEFT”. Press the right adjustment button once to confirm a new atomizer head has been fitted, or the left adjustment button if the previously used atomizer head has been replaced. Confirmation of a newly fitted atomizer head with the right adjustment button should only be made when the atomizer head is at room temperature. If the atomizer head has recently been used and is still warm,

TEMPERATURE CONTROL SETTINGS

the Active will not properly control atomizer temperature. Allow any newly fitted atomizer head or tank to cool to room temperature before confirming a new coil.

Reminder: Do not forget to prime your new atomizer head before first use.

Atomizer Head Resistance Lock

Locking an atomizer head's resistance prevents the "NEW COIL RIGHT, SAME COIL LEFT" message from being displayed if the tank is removed and refitted to the Active battery. When in temperature control mode, press and hold the power button and right adjustment button, a padlock icon should appear next to the atomizer resistance.

TEMPERATURE CONTROL SETTINGS

Note: The "New Coil Right, Same Coil Left" message will be displayed if the Active detects a significant change in the atomizer head resistance after removing and refitting the tank without locking the atomizer head resistance first.

Setting the TCR

TCR (temperature coefficient of resistance) settings allow atomizer heads made from coil materials other than those available in the standard temperature mode to be used with effective temperature control. The Active allows 3 different coil materials to be pre-set as M1, M2 and M3. To set the temperature coefficient of resistance to match a particular coil material, switch the Active off by quickly pressing the

TEMPERATURE CONTROL SETTINGS

power button 5 times. Then press and hold the power and right adjustment buttons at the same time to enter the menu. Press the power button to cycle between M1, M2 and M3. When a specific TCR mode is selected, use the left or right adjustment buttons to increase or decrease it. Leave the Active idle for 5 seconds to confirm your selection, then turn the Active back on.

Note: TCR settings are not generally required for standard coil material. If using standard nickel, titanium or 316 stainless steel coils, TCR settings will not have any advantage over the standard temperature control settings.

TEMPERATURE CONTROL SETTINGS

Material	TCR Value Range
Nickel	600 - 700
NiFe	300 - 400
Titanium	300 - 400
SS (303, 304, 316, 317)	80 - 200

Note: The TCR value displayed is 10^5 (100,000) times greater than the actual TCR value in standard units of K-1.

PROTECTIONS

Short Circuit Protection

If an atomizer short circuit occurs, the screen will display “ATOMIZER SHORT” and the Active will refuse to power or produce any vapour. Replacing the atomizer head should allow normal operation to resume. Follow the steps outlined in “*Replacing the Atomizer Head*” above to allow normal operation to resume.

No Atomizer Detected

If no atomizer head is detected, the screen will display “NO ATOMIZER FOUND”, and the Active will refuse to power or produce any vapour. If the “NO ATOMIZER FOUND” message is displayed, ensure the atomizer head is fully screwed down into the atomizer base. If the “NO ATOMIZER FOUND” message continues, replacing the atomizer head should allow normal operation to resume, follow the steps

PROTECTIONS

outlined in “*Replacing the Atomizer Head*” above.

Atomizer Head Resistance

If the resistance of the atomizer head is lower than 0.05ohm, the screen will display “ATOMIZER LOW” and the Active will refuse to power or produce any vapour. Replace the atomizer head with one of a compatible resistance to allow normal operation to resume.

Resetting the Active Battery

If the Active freezes during a firmware update, there is a reset button next to the USB port. To reset the Active, use a pin to press the reset button, this will reset the device and normal operation can resume.

Cleaning and Maintenance

The Active battery and tank connection can be cleaned by wiping down with tissue or a dry cloth. The tank can be

PROTECTIONS

cleaned by removing it from the battery, unscrewing the atomizer head from the atomizer base; then the entire tank and atomizer base can be cleaned under hot running water. Allow the tank to fully dry before refitting the atomizer head into the atomizer base. Reassemble the tank.

Note: Do not attempt to clean the atomizer head with water.

USING YOUR ACTIVE'S WIRELESS SPEAKER

Turning On/Off

To turn on the wireless speaker, press the speaker power button located at the rear of the Active for 3 seconds, the Active will beep and state that it is now in "Wireless Mode". To turn the speaker off, press the same power button for 3 seconds, you will hear a slightly quieter beep, the wireless speaker is now off.

USING YOUR ACTIVE'S WIRELESS SPEAKER

Pairing with Selected Device

To pair with your smartphone, follow the steps found in "*Turning On/Off*".

Once the Active speaker is turned on, after a few seconds it will say "wireless connecting, please wait". Keep the speaker no more than 1 metre from your smartphone and turn on your smartphone's wireless connection.

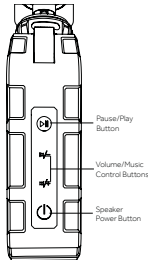
It will now search for active wireless devices (for instructions on how to pair with devices please see your smartphone manual).

Select the "ACTIVE" from the list of available devices, and the device will confirm successful connection. The speaker is now ready for use.

USING YOUR ACTIVE'S WIRELESS SPEAKER

Operation of the Speaker

- 1) To play or pause music, press the ▶ || button
- 2) To turn the volume up, press and hold the ▶▶/+ button
- 3) To turn the volume down, press and hold the ◀◀/- button
- 4) To skip to the next song, quickly press the ▶▶/+ button 3 times
- 5) To skip to the previous song, quickly press the ◀◀/- button 3 times



SPECIFICATIONS

Active Battery

Dimensions: 94.5mm (length) x 55.6mm (width) x 26.6mm (depth)

Weight: 166.4g

Battery capacity: 2100mAh integrated battery.

Output modes: VW/Bypass/TC-Ni/TC-Ti/TC-SS/TCR mode

Max charging current: 2.0A

Max output current: 50A

Max output voltage: 9V

Wattage range: 1-80W

Voltage range: 0.5-9V

Temperature range: 100-315°C/200-600°F

Screen size: 0.91 inch

Tank/Battery connection: 510 connection

Maximum tank diameter: 27mm

Atomizer head resistance compatibility (Power/Bypass): 0.05 – 3.5ohm

Atomizer head resistance compatibility (TC/TCR): 0.05 – 1.5ohm

SPECIFICATIONS

Active Tank

Dimensions: 27.0mm (diameter) x 47mm (height)

Weight: 48g

Atomizer type: WS atomizer heads

Tank capacity: 2ml

Filling method: Sliding top fill

Airflow type: Bottom adjustable

KIT CONTENTS

1 x Totally Wicked Active

1 x Active tank black

1 x WS04 1.3ohm atomizer head fitted

1 x WS01 0.2ohm atomizer head spare

1 x Hook

1 x QC USB cable

1 x User manual

Spare parts

PRODUCT STORAGE AND BATTERY PRECAUTIONS

- Store the Active e-cigarette and its accessories away from children whilst not in use.
- Please only use the charging cable provided.
- Please dispose of dead batteries in accordance with your country's appropriate legislation.
- Do not charge the battery in a damp environment, or in temperatures under 0°C or above 45°C.
- Do not use the device in temperatures under -10°C or above 60°C.
- Do not carry batteries in a pocket or bag with other metallic objects.
- Do not attempt to repair a faulty Active battery as these are sealed units with no serviceable parts. Attempted repairs will void the warranty.

ADDITIONAL PRODUCT INFORMATION

There are no reported medical side effects with this product. If you believe you experience a side effect, please contact the manufacturer.

WARRANTY

Totally Wicked Active components have a 28 day parts warranty with the exception of atomizer heads which are consumable items and are covered by our 'Dead on Arrival' warranty only. The USB cable supplied has a 12-month warranty. If any parts are found to be faulty within this time please contact our customer service team, whose details are on the back page of this booklet and we will arrange for a replacement. We may require the goods to be returned for further investigation.

PiLLbOX 38

Active

Manufactured in China
under the authority
of Pillbox38 UK Ltd,
Stancliffe Street,
Blackburn, Lancashire,
BB2 2QR.



Tel 01254 692244
www.totallywicked.co.uk



Tel 1(888) 761-9425
www.totallywicked.com



Tel 0941-78447082
www.totallywicked.de