



TOTALLY wicked®

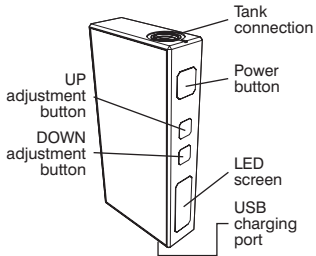
AURA

USER MANUAL

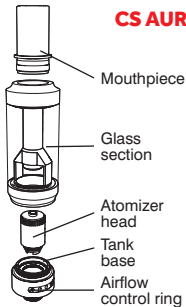
CONGRATULATIONS
ON PURCHASING YOUR

**TOTALLY WICKED
AURA
ELECTRONIC
CIGARETTE KIT.**

AURA BATTERY



CS AURA TANK



AURA QUICK START GUIDE

If you are familiar with using e-cigarettes, follow the quick start guide below to get vaping in minutes:

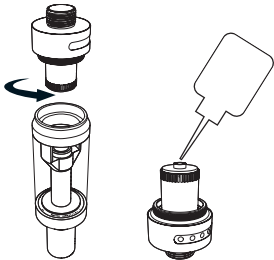
- Prime the atomizer head.
- Fill the tank.
- Switch the Aura on (5 clicks of the power button).
- Set the Aura to 12 watts.
- Press the power button and inhale
- Charge the battery (possibly not shipped with a full charge).

Detailed descriptions of these steps and more are given in the full user guide below.

USING YOUR AURA - PRIMING

Priming the Atomizer Head

Remove the tank from the Aura battery by unscrewing at the tank base. Turn the tank upside down, then unscrew the tank base from the glass section of the tank. Prime the atomizer head by dripping a few drops of e-liquid into its central hole.

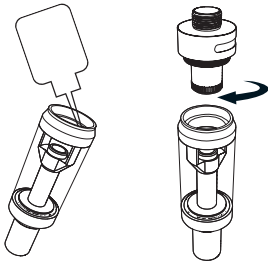


USING YOUR AURA - FILLING

Filling the Tank

Fill the tank through one of the apertures either side of the central air hole. Do not allow any e-liquid to enter the central air hole. Once filled, screw the tank base back onto the glass section of the tank then fit the tank back onto the Aura battery.

Note: After priming a new atomizer head and filling the tank, it is recommended to wait 5 minutes before vaping to ensure the atomizer head is fully saturated.



USING YOUR AURA

Atomizer Head Lifespan

Atomizer heads do not last forever and need to be periodically replaced. Time in use before replacement is required is generally from a few days to several weeks, depending on power used, vaping style, flavour and type of e-liquid used. A slight burnt taste, general loss of vapour production or a reduction in flavour intensity can all be indicators that the atomizer head requires replacement.

Powering On and Off

Switch the Aura on by quickly pressing the power button five times, the screen will activate indicating the Aura has been switched on. Quickly pressing the power button five times will switch the Aura off, the screen will deactivate indicating the Aura has been switched off.

USING YOUR AURA - SETTING THE CORRECT WATTAGE

The wattage on the Aura battery is adjustable and can be set from 1-30 watts. The wattage is set to 30W out of the box, we recommend reducing the wattage to 12W to prevent the atomizer head from burning prematurely. To set the correct wattage, ensure the Aura is switched on; then keep pressing the down adjustment button until the screen reads 12W. Lower wattage settings produce cooler, less dense vapour: but setting the wattage too low will produce little, if any vapour. Higher wattage settings produce larger clouds of vapour, but setting the wattage too high

can lead to poor flavour; or even a burnt taste in the vapour. Experiment to find your own favourite setting, which will generally be between 7W and 15W.

Tip: Press and hold down either of the adjustment buttons to make speedy changes to the wattage.

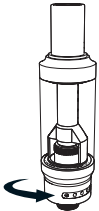
Vaping

Press and hold the power button as you inhale the vapour, the screen will display a vape timer while the power button is held down.

USING YOUR AURA

Adjusting Airflow

If you find the air flow too airy or too tight while vaping, rotate the airflow control ring on the base of the tank. Exposing more holes will provide more air flow while exposing fewer holes will restrict the air flow. Experiment to find your preference.



E-liquid Level

To prevent the atomizer head from becoming dry and burning prematurely, ensure the e-liquid level does not drop below the bottom of the glass section of the tank.

USING YOUR AURA

Atomizer Head Protection

If the power button is held down for longer than 10 seconds while vaping, the screen will display "OVER 10S" and the Aura will refuse to power or produce any vapour. Releasing the power button will allow normal operation to resume.

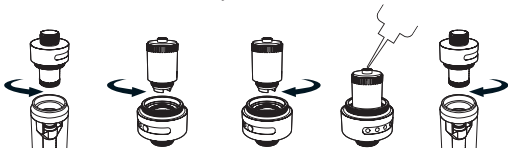
Charging the Battery

The Aura is charged by connecting the charge port on the battery to a USB port or suitable wall adaptor with the supplied charging lead. The screen will activate when the charge lead is first connected, and display an animated battery icon while charging. Once the battery is fully charged the screen will switch off.

USING YOUR AURA - REPLACING THE ATOMIZER HEAD

To replace the atomizer head, unscrew the tank from the Aura battery. Turn the tank upside down, then unscrew the tank base from the glass section of the tank. Unscrew the atomizer head from the tank base and replace. Prime the new atomizer head by dripping a few drops of e-liquid into its central hole. Reassemble the tank and refit the tank back onto the Aura battery.

Reminder: After priming a new atomizer head it is recommended to wait 5 minutes before vaping to ensure the atomizer head is fully saturated.



USING YOUR AURA - SETTINGS

Changing Information Displayed Onscreen

Ensure the Aura is switched on, then press and hold down the power and up adjustment buttons at the same time until the screen begins to flash. Once the screen is flashing, keep pressing either of the adjustment button to cycle between voltage (V), puff counter (P), total time vaping in seconds (S) or bigger battery icon displayed onscreen. Press the power button to confirm the selection.

Stealth Mode

If stealth mode is enabled, the display will not activate when pressing the power button to vape. Tapping the power button will briefly activate the display enabling you to view current settings, the display will also activate whenever the adjustment buttons are pressed to make changes to wattage. To enable/disable stealth mode, ensure the Aura is switched on; then press and hold down the power and down adjustment buttons at the same time, the screen will display "STEALTH ON" when enabled and "STEALTH OFF" when disabled.

Key Lock Mode

Key lock mode prevents accidental changes to the wattage. If key lock is enabled, the screen will display “LOCK” if the adjustment buttons are pressed. Adjustments to wattage cannot be made until key lock has been disabled. To enable/disable key lock, ensure the Aura is switched on; then press and hold down both adjustment buttons at the same time, then screen will display “LOCK” when enabled and “UNLOCK” when disabled.

Rotating The Display

Switch the Aura off, then press and hold down both adjustment buttons at the same time to rotate the display 180°. Switch the Aura back on.

PROTECTIONS

Short Circuit Protection

If an atomizer short circuit occurs, or the resistance of the fitted atomizer head is below 0.6ohm the screen will display "ATOMIZER SHORT" and the Aura will refuse to power or produce any vapour. Replacing the atomizer head should allow normal operation to resume. To replace the atomizer head follow the steps outlined in REPLACING THE ATOMIZER HEAD above.

No Atomizer Head Detected Protection

If no atomizer head is detected, or the resistance of the atomizer heads exceeds 3.0ohm; the screen will display "NO ATOMIZER" and the Aura will refuse to power or produce any vapour. Ensure the fitted atomizer head is fully screwed into the base of the tank, then refit the tank onto the battery. If the "NO ATOMIZER" message continues, replacing the atomizer head should allow normal operation to resume. To replace the atomizer head follow the steps outlined in REPLACING THE ATOMIZER HEAD above.

Low Voltage Protection

To prevent damaging the battery, if battery voltage drops to 3.3V, "LOCK" will be displayed onscreen and the Aura will refuse to power or produce any vapour. Charge the battery using the steps outlined in CHARGING THE BATTERY above to unlock the Aura allowing normal operation to resume.

Temperature Alert

If the temperature of the Aura exceeds the maximum safe operating temperature, the screen will display "DEVICE TOO HOT" and the Aura will refuse to power or produce any vapour. Stop vaping and allow the Aura to cool down for normal operation to resume.

Cleaning And Maintenance

The Aura battery and tank connection can be cleaned by wiping down with tissue or a dry cloth. The CS Aura tank can be cleaned by removing it from the battery, unscrewing the tank base from the glass section of the tank then removing the atomizer head. The entire tank and base can now be cleaned under hot running water. Allow the tank to fully dry before refitting the atomizer head into the tank base. Reassemble the tank.

Note: Do not attempt to clean the atomizer head with water. Do not submerge the Aura battery unit in water or allow it to get wet.

Available Atomizer Heads

If you would like to try vaping with increased power, vapour production and more air flow, CS 0.75ohm and 1.2ohm atomizer heads are available to purchase separately. The CS 0.75ohm can be vaped from 14W – 25W and the CS 1.2ohm can be vaped from 13W – 30W. Higher wattage settings will require more frequent battery charging and may require the atomizer head to be replaced more often.

Note: you may need to reduce the strength of your e-liquid when vaping at higher power settings.

SPECIFICATIONS

Aura Battery

Dimensions: 77mm (length)
x 37mm (depth) x 15.0mm (width).

Weight: 120g.

Battery capacity: 1500mAh.

Output mode: Variable Wattage.

Wattage range: 1 – 30 watts.

Voltage range: 0.5 – 8.0 volts.

Maximum charging current: 2.0 amperes.

Thread type: 510 Connection.

Atomizer resistance compatibility:
0.6ohm – 3.0ohm.

CS Aura Tank

Dimensions: 15mm (diameter)
x 57mm (length).

Weight: 24g.

Tank capacity: 1.8ml.

Atomizer type: CS.

Thread type: 510 Connection.

Atomizer head resistance: 1.5ohm .

Airflow type: Bottom, adjustable.

Maximum refill nozzle diameter: 3.3mm.

Recommended power: 7-15W.

Suggested power: 12W.

PRODUCT STORAGE AND BATTERY PRECAUTIONS

- Store the Aura e-cigarette and its accessories away from children whilst not in use.
- Please only use the charging cable provided.
- Please dispose of dead batteries in accordance with your country's appropriate legislation.
- Do not charge the battery in a damp environment, or in temperatures under 0°C or above 45°C.
- Do not use the device in temperatures under -10°C or above 60°C.
- Do not carry batteries in a pocket or bag with other metallic objects.
- Do not attempt to repair a faulty Aura battery as these are sealed units with no serviceable parts. Attempted repairs will void the warranty.

Additional Product Information

There are no reported medical side effects with this product. If you believe you experience a side effect, please contact the manufacturer.

WARRANTY

Aura components have a 28-day parts warranty with the exception of atomizer heads which are consumable items and are covered by our 'Dead on Arrival' warranty only. The USB cable supplied has a 12-month warranty. If any parts are found to be faulty within this time please contact our customer service team, whose details are on the back page of this booklet and we will arrange for a replacement. We may require the goods to be returned for further investigation.

KIT CONTENTS

- 1 x Aura battery
- 1 x CS Aura tank
- 1 x CS 1.5ohm atomizer head (fitted)
- 1 x USB charging cable
- 1 x User manual

PiLLbOX 38

AURA

Manufactured in China
under the authority
of Pillbox38 UK Ltd,
Stancliffe Street,
Blackburn, Lancashire,
BB2 2QR.



Tel 01254 692244
www.totallywicked.co.uk



Tel 1(888) 761-9425
www.totallywicked.com



Tel 0941-78447082
www.totallywicked.de