

CONGRATULATIONS ON PURCHASING YOUR TOTALLY WICKED SKOPE S ELECTRONIC CIGARETTE KIT

QUICK START GUIDE

For those familiar with e-cigarettes, the steps below can be followed to allow the device to be used in the shortest possible time:

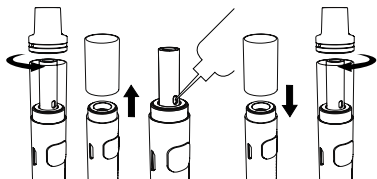
- Prime the atomizer head
- Fill the tank
- Switch the Skope S on
- Press the power button and inhale
- Charge the battery (it may not have been shipped with a full charge)

USING YOUR SKOPE S

Priming the Atomizer Head

Note: It is important to "prime" a new atomizer head before first use. Failure to do so can cause the atomizer coil to overheat, leading to an unpleasant taste and sometimes irreversible damage to the atomizer head requiring early replacement.

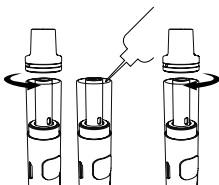
To prime the atomizer head, remove the mouthpiece from the tank by unscrewing, then remove the glass section of the tank by pulling upwards. Unscrew the atomizer head and prime by dripping a few drops of e-liquid onto the cotton visible through the sides of the atomizer. After priming, screw the atomizer head back into place, replace the glass section and screw the mouthpiece back on.



Note: Leave a new atomizer head to sit with the tank full of e-liquid for five minutes before vaping. This ensures the atomizer head is fully saturated with e-liquid before use.

Filling the Tank

Remove the mouthpiece from the tank by unscrewing. Fill the tank with e-liquid, being careful not to overfill and avoid filling down the central airflow hole. Once filled, refit the mouthpiece.

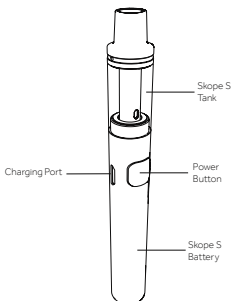


Powering On and Off:

To switch on, quickly press the power button five times; the indicator light will flash three times. Quickly press the power button five times to turn the battery off; the indicator light will flash three times.

Vaping:

Press and hold the power button as you inhale the vapour.



E-liquid Level:

To prevent the atomizer head from becoming dry and burning prematurely, ensure the fluid level does not drop below the fluid feed holes on the atomizer, these can be recognised by the visible parts of cotton on the atomizer.

Charging the Battery:

The Skope S is charged by inserting the USB cable into the charging port. The indicator light will illuminate red while charging. Once fully charged, the red indicator light will switch off.

Replacing the Atomizer Head:

To replace the atomizer head, follow the steps outlined in *Priming the Atomizer Head* to remove and separate the tank. Prime your new atomizer head and reassemble.

PROTECTIONS

Short Circuit Protection:

If an atomizer short circuit occurs, the indicator light will flash three times and the Skope S will switch off. Replace the atomizer head and charge the battery to restore power to allow normal operation to resume.

No Atomizer Detected:

If no atomizer head is detected when the power button is pressed, the indicator light will flash continuously until the power button is released. If this happens, ensure the atomizer head is properly fitted, referring to appropriate instructions above.

Atomizer Head Protection:

If the power button is held down for longer than 15 seconds while vaping, the indicator light will flash eight times and the Skope S will switch off. Release the power button and charge the battery to restore power and allow normal operation to resume.

Kit contents:

- 1 x Totally Wicked Skope S
- 2 x BFHN 0.5ohm atomizer heads
- 3 x Silicone rings
- 1 x USB cable
- 1 x User manual

Manufactured in China under the authority of Pillbox38 UK Ltd, Stancliffe Street, Blackburn, Lancashire, BB2 2QR.

Specifications:

Dimensions: 14.0mm (diameter) x 113.0mm (length)
Weight: 38g
Battery capacity: 650mAh integrated battery.
Output modes: Constant voltage
Max charging current: 1.0A
Max output voltage: 1.85V
Tank/Battery connection: All in one/
Proprietary connection.
Tank capacity: 1.2ml
Filling method: Screw top fill
Airflow type: Non-adjustable
Max refill nozzle diameter: 2.8mm

ADDITIONAL PRODUCT INFORMATION




There are no reported medical side effects with this product. If you believe you experience a side effect, please contact the manufacturer.

PRODUCT STORAGE AND BATTERY PRECAUTIONS

- Store the Skope S and its accessories away from children when not in use.
- Please only use the charging cable provided.
- Please dispose of dead batteries in accordance with your country's appropriate legislation.
- Do not charge the battery in a damp environment, or in temperatures under 0°C or above 45°C.
- Do not use the device in temperatures under -10°C or above 60°C.
- Do not carry batteries in a pocket or bag with other metallic objects.
- Do not attempt to repair a faulty Skope S battery as these are sealed units with no serviceable parts. Attempted repairs will void the warranty.

WARRANTY

The Skope S components have a 28 day parts warranty, with the exception of atomizer heads, which are consumable items and covered by "dead on arrival" warranty only. The USB cable supplied has a 12-month warranty. If any parts are found to be faulty within this time please contact our customer service team, whose details are below and we will arrange for a replacement. We may require the goods to be returned for further investigation.

 Tel 01254 692244 www.totallywicked.co.uk
 Tel 1(888) 761-9425 www.totallywicked.com
 Tel 0941-78447082 www.totallywicked.de

