



Totally Wicked®

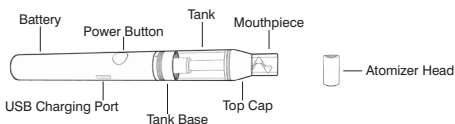
# switz2 basic

ELECTRONIC CIGARETTE KIT

USER MANUAL

**Congratulations on purchasing your Totally Wicked Switz2 Basic Electronic Cigarette Kit**

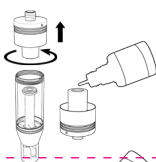
## The Totally Wicked Switz2 Basic



### Using your Switz2 Basic

#### Priming the Atomizer Head

Gripping the tank at the tank base, unscrew the tank from the battery. Turn the tank upside down, and holding the tank by the clear plastic body unscrew the base. Prime the atomizer head by dripping a few drops of E-liquid into the central hole of the atomizer head. After priming, screw the tank base back onto the tank, then screw the assembled tank back onto the battery. **Note: Leave a new atomizer head to sit in a tank full of E-liquid for five minutes before vaping. This ensures the atomizer head is fully saturated with E-liquid before use.**



#### Filling the Tank

Hold the clear section of the tank and unscrew the top cap. Fill the tank leaving an air gap of 2mm at the top of the tank. **Avoid filling down the central airflow hole.** Once filled, screw the top cap back on.



#### Switching On and Off:

To turn on, press the power button three times in quick succession, the blue indicator light will flash three times. If the Switz2 Basic is already turned on, press the power button three times in quick succession to turn the battery off, the blue indicator light will flash three times.

#### Vaping:

Place the mouthpiece in your mouth then press and hold the power button as you gently inhale the vapour, release the power button when you stop inhaling. The indicator light will illuminate while the power button is held down.

#### E-liquid Level:

To prevent the atomizer head from becoming dry and burning prematurely, ensure the E-liquid level does not drop below the bottom of the clear section of the tank.

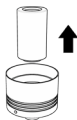
#### Charging the Battery:

Vapour production will reduce noticeably as the charge in the battery gets close to running out. The Switz2 Basic is recharged by inserting the charge lead into the charge port located to the right of the power button. The indicator light will illuminate red and remain on while charging. Once fully charged, the red indicator light will turn off.

#### Installing/Replacing an Atomizer Head:

To install a new atomizer head, follow the process shown in **Priming the Atomizer Head**. Remove the atomizer head by simply pulling out. Insert the new atomizer head by gently pushing into place. Prime the atomizer head and reassemble the tank as shown in **Priming the Atomizer Head** above.

**Reminder: Leave a new atomizer head to sit in a tank full of E-liquid for five minutes before vaping. This ensures the atomizer head is fully saturated with E-liquid before use.**



#### Short Circuit Protection:

If an atomizer short circuit occurs, the indicator light will illuminate for 2 seconds and the Switz2 Basic will turn off. Replace the atomizer head if this occurs.

#### Atomizer Head Protection:

If the power button is held down for longer than ten seconds while vaping, the indicator light will flash twice and the Switz2 Basic will stop producing vapour.

#### Low Voltage Protection:

If battery voltage drops to 3.3 volts the indicator light will flash ten times and the Switz2 Basic will refuse to power or produce any vapour. Charge the Switz2 Basic using the steps outlined in **Charging the Battery** above.

#### Atomizer Head Resistance:

The Switz2 Basic battery may only be used with atomizer resistances between 1.0 ohm and 5.0 ohm.

#### Kit Contents

- 1 x Switz2 Basic Battery
- 1 x Switz2 Basic Tank
- 2 x HC Atomizer Head 1.6ohm (1 x Fitted, 1 x Spare)
- 1 x USB Charging Cable
- 1 x User Manual

#### Specifications

- Dimensions:** 14mm (diameter) x 136mm (length)
- Battery:** 650mAh Integrated Battery
- Max Charging Current:** 500mAh
- Tank Capacity:** 1.3ml
- Atomizer Type:** HC Atomizer Heads
- Voltage Output:** 4.0V - 3.3V (Direct output)
- Battery Voltage:** 3.7 (Nominal)
- Power Output:** 2 – 13 watts
- Resistance Range for battery operation:** 1.0 – 3.0ohm.
- Maximum Filling Nozzle Diameter:** 2.7mm

#### Warranty

The Switz2 Basic components have a 28 day parts warranty, with the exception of Atomizer Heads, which are consumable items and covered by "dead on arrival" warranty only. The USB cable supplied has a 12-month warranty. If any parts are found to be faulty within this time please contact our customer service team, whose details are on the back page of this booklet and we will arrange for a replacement. We may require the goods to be returned for further investigation.

#### Additional product information

There are no reported medical side effects with this product. If you believe you experience a side effect, please contact the manufacturer.

#### Product Storage and Battery Precautions

- Store the Switz2 Basic and its accessories away from children when not in use.
- Ensure the Switz2 Basic is powered off when not in use.
- Avoid accidentally pressing the Switz2 Basic power button when not in use.
- Please only use the charging cable provided.
- Please dispose of dead batteries in accordance with your country's appropriate legislation.
- Do not charge the batteries in a damp environment.
- Do not use the device when temperatures are outside the range of -10°C - 60°C.
- Do not charge the battery when temperatures are outside the range of 0°C – 45°C.
- Do not attempt to repair a faulty Switz2 Basic as these are sealed units with no serviceable parts. Attempted repairs will void the warranty.

Manufactured in China under the authority of Pillbox38 UK Ltd, Stancliffe Street, Blackburn, Lancashire, BB2 2QR.

Tel 01254 692244 www.totallywicked.co.uk  
Tel 1(888) 761-9425 www.totallywicked.com  
Tel 0941-78447082 www.totallywicked.de

PILLBOX 38