



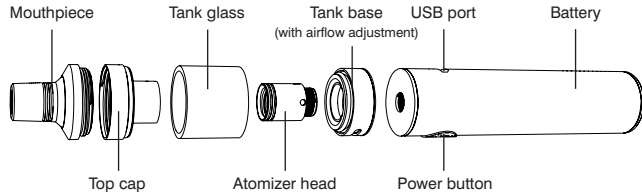
TOTALLY wicked®

TORNADO EX2

USER MANUAL

CONGRATULATIONS
ON PURCHASING YOUR
TORNADO EX2
ELECTRONIC
CIGARETTE KIT.

THE TOTALLY WICKED TORNADO EX2



TORNADO EX2



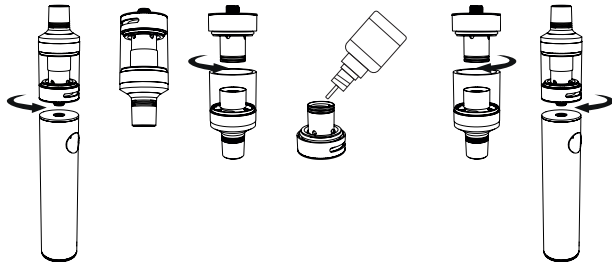
USING YOUR TORNADO EX2 KIT

Priming the Atomizer Head

It is important to “prime” a new atomizer head before first use. Failure to do so can cause damage to the atomizer head. Unscrew the tank assembly from the battery by gripping the airflow adjuster and remove. Invert the tank. Holding the tank cap and glass, and gripping the airflow adjuster, unscrew and remove the tank base from the tank. Prime the atomizer head by dripping a few drops of e-liquid into its central hole to soak the wicking material visible through the hole. Screw the atomizer base back onto the tank cap and glass, then refit the tank assembly to the battery.

Note: Leave a new atomizer head to sit in a tank full of e-liquid for five minutes before vaping. This ensures the atomizer head is fully saturated with e-liquid before use.

PRIMING THE ATOMIZER HEAD





USING YOUR TORNADO EX2 KIT

Atomizer Head Lifespan

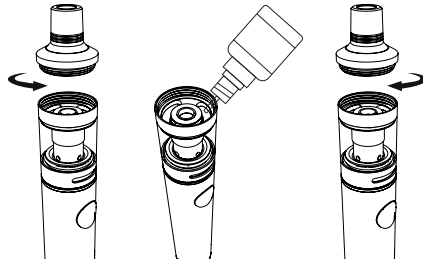
Atomizer heads do not last forever and need to be replaced periodically. Time in use before replacement is required is generally from a few days to several weeks, depending on power used, vaping style, and flavour and type of e-liquid. A slight burnt taste, general loss of vapour production, or a reduction in flavour intensity can all be indicators that the atomizer head requires replacement.

Filling the Tank

Hold the tank top, and remove the mouthpiece by unscrewing it. Fill the tank with e-liquid using one of the dedicated fill holes located either side of the central air hole, do not allow e-liquid to enter the central air hole. Once filled, refit the mouthpiece.

Note: To avoid leaking, ensure an air gap of around 2mm remains above the filled liquid.

FILLING THE TANK





USING YOUR TORNADO EX2 KIT

Switching On and Off

To switch the Tornado EX2 on, quickly press the power button five times; the indicator light will flash three times. Quickly press the power button five times to switch off; the indicator light will flash three times.

Changing Output Modes

The Tornado EX2 has 2 modes, constant voltage or direct output. Constant voltage produces less heat, power and vapour, but delivers a consistent vape experience whether the battery is fully charged or

nearly depleted. Direct output produces more heat, power and vapour for a more satisfying vape experience, but you may notice power and vapour production decrease as the battery charge depletes. To switch between constant voltage and direct output modes, switch the battery off by pressing the power button 5 times, then press and hold the power button; the indicator light will illuminate white for direct output mode or orange for constant voltage mode. Switching the battery back on activates the selected mode.

USING YOUR TORNADO EX2 KIT

Vaping

Press and hold the power button as you gently inhale the vapour, release the power button when you have finished inhaling. The indicator light will illuminate while the power button is held down, and will illuminate again after vaping to show battery condition (see page 10).

Adjusting Airflow

If you find air flow too airy or too tight, rotate the airflow adjuster to expose fewer or more holes. Experiment to find your preference.





USING YOUR TORNADO EX2 KIT

E-liquid Level

To prevent the atomizer head from becoming dry and burning prematurely, ensure the fluid level never drops below the 4 fluid feed holes around the bottom of the atomizer head.

Battery Life Indication

The indicator light will relight 2 seconds after vaping, and for the following 4 seconds will show the battery life remaining. Illumination will remain constant if the battery has full charge and as the

level of charge decreases the indicator light will flash faster. The table below can be used as a reference.

Battery Level	Light Condition
100%-60%	Constant light
59%-30%	Flashes slowly
29%-10%	Flashes moderately
9-0%	Flashes quickly

USING YOUR TORNADO EX2 KIT

Charging the Battery

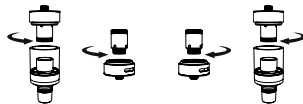
The Tornado EX2 is recharged by inserting the charge lead into the charge port. The indicator light will illuminate red while charging. Once fully charged, the indicator light will switch off. The Tornado EX2 can be used normally while charging.

Replacing the Atomizer Head

Remove the tank from the battery and unscrew the tank base as described in *Priming the Atomizer Head* at the beginning of this manual. The atomizer head can be removed from the base by

wiping dry and unscrewing. Remember to prime your new atomizer head after replacement.

Note: Leave a new atomizer head to sit in a tank full of e-liquid for five minutes before vaping. This ensures the atomizer head is fully saturated with e-liquid before use.





USING YOUR TORNADO EX2 KIT PROTECTIONS

Atomizer Head Choice

The Tornado EX2 is fitted as standard with an EX 1.2ohm atomizer head, and an EX 0.5ohm atomizer head is provided as a spare. The fitted EX 1.2 ohm is suitable for tighter airflow similar to smoking a conventional cigarette, while the EX 0.5 ohm is suitable for more open airflow and will produce bigger clouds of vapour.

Atomizer Head Protection

If the power button is held down for longer than 15 seconds while vaping, the indicator light will flash 10 times and the Tornado EX2 will refuse to power or produce any vapour. Release the power button to allow normal operation to resume.

Low Voltage Protection

If battery voltage drops to 3.3 volts, the indicator light will flash 40 times and the Tornado EX2 will switch off. Charge the Tornado EX2 using the steps outlined in *Charging the Battery* to allow normal operation to resume.

Incompatible Atomizer Head Resistance

If atomizer head resistance is below 0.2ohm, the indicator light will quickly flash 5 times when pressing the power button. If atomizer head resistance exceeds 3.5ohm, the indicator light will flash slowly when pressing the power button. Replacing the atomizer head with one of a compatible resistance above 0.2ohm and below 3.5ohm will allow normal operation to resume.





PROTECTIONS

Short Circuit Protection

If an atomizer short circuit occurs, the indicator light will flash up 5 times and the Tornado EX2 will switch off. Replace the atomizer head following the steps outlined in *Replacing the Atomizer Head*, then follow the steps outlined in *Charging the Battery* to restore power and allow normal operation to resume.

CLEANING & MAINTENANCE

The Tornado EX2 battery and tank connection can be cleaned by wiping down with tissue or a dry cloth. The tank can be cleaned by removing it from the battery and unscrewing the atomizer head from the atomizer base; then the entire tank and atomizer base can be cleaned under hot running water. Allow the tank to fully dry before refitting the atomizer head into the atomizer base. Reassemble the tank.

Note: To prevent damaging the battery or atomizer head, do not allow them to come into contact with water.

SPECIFICATIONS

Dimensions: 19mm (diameter) x 119mm (length)

Battery: 1500mAh Integrated Battery

Max Charging Current: 500mA

Tank Capacity: 2.0ml

Atomizer Head Type: EX

Voltage Output: 4.2V - 3.3V (Direct output)
3.5V (Constant voltage)

Resistance Range: 0.2 – 3.5ohm

Maximum Filling Nozzle Diameter: 2.8mm





PRODUCT STORAGE AND BATTERY PRECAUTIONS

- Store the Tornado EX2 kit and its accessories away from children when not in use.
- Ensure the Tornado EX2 kit is powered off when not in use.
- Avoid accidentally pressing the Tornado EX2 power button when not in use.
- Please only use the charging cable provided.
- Please dispose of dead batteries in accordance with your country's appropriate legislation.
- Do not charge the batteries in a damp environment.
- Do not use the device when temperatures are outside the range of -10°C - 60°C.
- Do not charge the battery when temperatures are outside the range of 0°C – 45°C.
- Do not attempt to repair a faulty Tornado EX2 as these are sealed units with no serviceable parts. Attempted repairs will void the warranty.

WARRANTY

The Tornado EX2 kit components have a 28 day parts warranty, with the exception of atomizer heads, which are consumable items and covered by “dead on arrival” warranty only. The USB cable supplied has a 12-month warranty. If any parts are found to be faulty within this time please contact our customer service team, whose details are on the back page of this booklet and we will arrange for a replacement. We may require the goods to be returned for further investigation.





ADDITIONAL PRODUCT INFORMATION

Additional product information

There are no reported medical side effects with this product. If you believe you experience a side effect, please contact the manufacturer.

KIT CONTENTS

- 1 x Tornado EX battery
- 1 x Tornado EX2 tank
- 1 x EX 1.2ohm atomizer head (fitted)
- 1 x EX 0.5ohm atomizer head (spare)
- 1 x USB cable
- 1 x User manual
- 1 x Spare parts



PiLLbOX 38

TORNADO EX2

Manufactured in China
under the authority
of Pillbox38 UK Ltd,
Stancliffe Street,
Blackburn, Lancashire,
BB2 2QR.



Tel 01254 692244
www.totallywicked.co.uk



Tel 1 (888) 761-9425
www.totallywicked.com



Tel 0941-78447082
www.totallywicked.de