



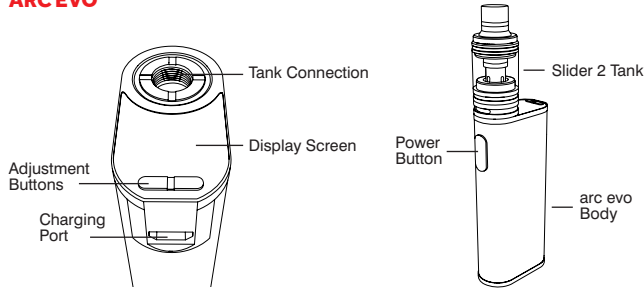
TOTALLY WICKED®

arc | evo

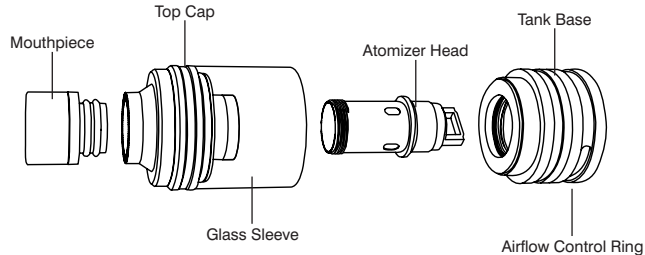
USER MANUAL

CONGRATULATIONS
ON PURCHASING YOUR
TOTALLY WICKED
ARCEVO
ELECTRONIC
CIGARETTE KIT

ARCEVO



ARC EVO



USING YOUR ARC EVO

If you are familiar with using e-cigarettes, follow the quick start guide below to be vaping in minutes:

- Prime the atomizer head.
- Fill the tank.
- Switch the arc evo on (5 clicks of the power button).
- Ensure the arc evo is set to wattage mode.

- Use the adjustment buttons to set the arc evo to 32 watts.
- Press and hold the power button and inhale
- Charge the battery (possibly not shipped with a full charge).

Detailed descriptions of these steps and more are given in the following pages of this manual.

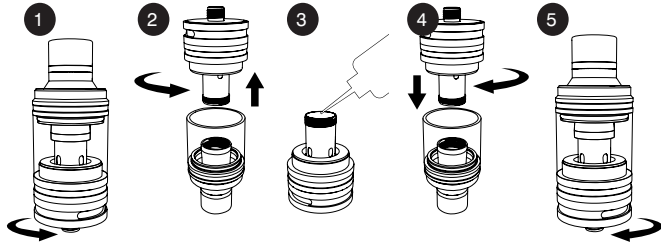
PRIMING

It is important to “prime” a new atomizer head before first use. Failure to do so can cause the atomizer coil to overheat, resulting in a burnt taste and sometimes irreversible damage to the atomizer head requiring early replacement.

To prime the atomizer head, remove the Slider 2 tank from the arc evo battery by unscrewing from the tank base. Turn the tank upside down and unscrew the tank base from the glass

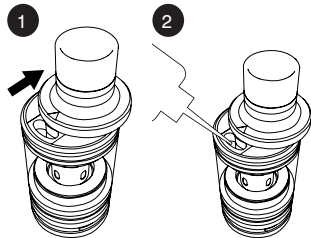
section of the tank.

Prime the fitted atomizer head by slowly dripping e-liquid onto the wire mesh and cotton, avoiding dripping e-liquid directly down the centre of the atomizer head. Continue to slowly drip e-liquid onto the wire mesh and cotton until the cotton visible through the sides of the atomizer head changes colour. Refit the tank base onto the glass section of the tank, refit the tank back onto the battery.



FILLING

Slide the top cap open by pushing firmly in the direction indicated by the arrow on the top cap to expose the fill hole. Insert the filling nozzle into the fill hole and fill the tank, being careful to leave an air gap of approximately 2mm. Slide the top cap shut after filling.



ATOMIZER HEAD LIFESPAN

Atomizer heads do not last forever and need to be periodically replaced. The lifespan of an atomizer head can vary from several days up to several weeks. Factors affecting lifespan include wattage, vaping style, flavour and type of e-liquid. Indicators that the atomizer head may require replacement include a slight burnt taste, general loss of vapour production or a reduction in flavour intensity.

SWITCHING ON AND OFF

Switch the arc evo on by quickly pressing the power button five times, the screen will activate indicating the arc evo has been switched on. Quickly press the power button five times to switch the arc evo off, the screen will deactivate indicating the arc evo has been switched off.

SELECTING THE CORRECT MODE

To select the correct output mode, quickly press the power button 3 times to enter the mode selection screen. Keep pressing the left or right adjustment buttons to cycle between the different output modes, once Wattage is displayed onscreen; press the power button to activate Wattage mode.

Note: The atomizer heads supplied with the arc evo kit are only compatible with Wattage and Bypass modes and will not work correctly in any other mode. Alternative atomizer heads to suit temperature control modes are available on the Totally Wicked website (www.totallywicked.co.uk) and via all Totally Wicked dedicated stores.

SETTING THE WATTAGE

The arc evo has adjustable wattage that can be set from 1 – 60 watts. Use the left or right adjustment buttons to increase or decrease the wattage on the battery. The fitted atomizer head can be used from 23 – 60 watts. For the best balance of flavour and vapour production we suggest a starting point of 32 watts, which you can then adjust in small increments to find your favourite setting.

VAPING

Press and hold the power button as you inhale the vapour, the screen will display a vape timer while the power button is held down.

ADJUSTING AIRFLOW

If you find the air flow too airy or too tight while vaping, rotate the airflow control ring located on the tank base. Experiment by rotating the air flow control ring to find your preferred setting.

E-LIQUID LEVEL

To prevent the atomizer head from becoming dry and burning prematurely, ensure the amount of e-liquid inside the Slider 2 tank does not drop below the fluid feed holes located on the sides of the atomizer head.

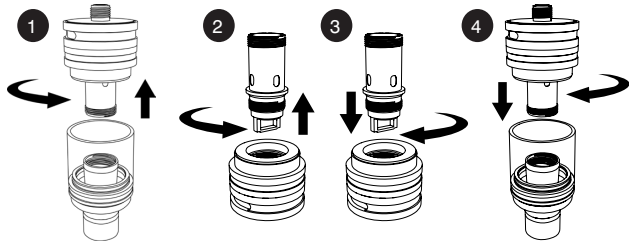
CHARGING THE BATTERY

The arc evo is charged by connecting the charge port on the battery to a USB port or suitable wall adaptor with the supplied charging lead. The battery icon will begin to flash onscreen for 30 seconds when the charge lead is first connected. This will then be replaced by a full screen flashing battery icon. Once the battery is fully charged the screen will switch off completely.

REPLACING ATOMIZER HEAD

To replace the atomizer head, remove the Slider 2 Tank from the arc evo battery by unscrewing from the tank base. Turn the tank upside down, unscrew the tank base from the glass section of the tank. Unscrew the atomizer head from the atomizer base and replace. Prime the new atomizer head by following the steps outlined in **Priming** on page 6. Refit the tank base onto the glass section of the tank, refit the assembled tank back onto the battery.

Reminder: After priming a new atomizer head and refilling the tank, it is recommended to wait 5 minutes before vaping to ensure the atomizer head is fully saturated



ONSCREEN MESSAGES

ATOMIZER HEAD PROTECTION

If the power button is held down for longer than 10 seconds while vaping, the screen will display "Over 10s Protection" and the arc evo will not continue to power the atomizer or produce any vapour. Releasing the power button will allow normal operation to resume.

FLASHING BATTERY ICON

If the onscreen battery icon begins to flash, this is an indication that the battery will need charging soon.

WEAK BATTERY

If “WEAK BATTERY” is displayed onscreen, this indicates the arc evo has insufficient battery voltage to deliver the currently selected wattage; wattage will be reduced to protect the battery. Charge the battery using the steps outlined in **Charging The Battery**, on page 13, to allow normal operation to resume.

LOCK

If “Lock” is displayed onscreen, this indicates the arc evo has insufficient battery charge. To prevent damaging the battery, the arc evo will no longer power the atomizer or produce any vapour. Charge the battery using the steps outlined in **Charging The Battery**, on page 13, to unlock the arc evo and allow normal operation to resume. The arc evo can be used normally while charging.

ADDITIONAL SETTINGS

STEALTH MODE

If stealth mode is enabled, the display will not activate when pressing the power button to vape. The display will still activate whenever the adjustment buttons are pressed to make changes to wattage or settings, or if the power button is pressed briefly. To enable stealth mode, ensure the arc evo is switched on, then press and hold down the power and left

adjustment buttons at the same time, the screen will display “Stealth ON” when enabled. Repeat the process to disable stealth mode, the screen will display “Stealth OFF” when disabled.

KEY LOCK MODE

Key lock mode prevents accidental changes to the wattage or temperature settings. If key lock mode is enabled, the screen will display “Lock” whenever the adjustment buttons are pressed. Adjustments to wattage or temperature settings cannot be made until key lock has been disabled. To

enable key lock mode, ensure the arc evo is switched on, then press and hold down both adjustment buttons at the same time; the screen will display “Lock” when enabled. Repeat the process to disable key lock mode; the screen will display “Unlock” when disabled.

ENU CHARGING PROTECTION MODE

ENU (Expected Normal Use) mode offers an additional layer of protection when charging the battery. If the battery’s temperature exceeds 50°C while charging, the screen will display “BATTERY TOO HOT” and charging will be disabled; once the temperature of the battery drops to 45°C charging will resume. If the battery’s temperature drops to -5°C while charging, the screen will display “BATTERY TOO COLD” and

charging will be disabled; once the temperature of the battery increases above 0°C, charging will resume. It is strongly recommended not to disable this safety feature. To enable/disable ENU mode, ensure the arc evo is switched on and quickly press the power button twice. If enabled the screen will display “ENU ON”; if disabled the screen will display “ENU OFF”.

ROTATING THE DISPLAY

Switch the arc evo off, then press and hold down both adjustment buttons at the same time to rotate the display 180°. Switching the arc evo back on activates any screen changes made.

BYPASS MODE

Bypass mode provides a direct connection between the battery cell and the atomizer head. The higher the battery charge; the more power and vapour will be produced. In

bypass mode the wattage is fixed and cannot be manually adjusted.

Lower resistance atomizer heads will produce more power and vapour while higher resistance atomizer heads produce less power and vapour.

Note: Bypass mode is only advised for standard atomizer heads. It will not work effectively for atomizer heads made from nickel or titanium.

TEMPERATURE CONTROL MODES

SWITCHING BETWEEN OUTPUT MODES

Temperature control vaping modes can only be used when specific coil materials have been used for atomizer head manufacture, namely nickel (Ni), titanium (Ti) or stainless steel (SS). To select the appropriate temperature control mode, quickly press the power button 3 times to enter the mode selection screen. Then press the left or right adjustment

buttons to cycle between Temp Ni, Temp Ti, Temp SS, TC M1, TC M2 or TC M3; press the power button to confirm the selection.

Note: Only atomizer heads with coils made from nickel, titanium or “316” stainless steel are compatible with temperature control mode. Select the appropriate mode to match your atomizer head type.

ADJUSTING WATTAGE IN TEMPERATURE CONTROL/TCR MODES

The maximum wattage applied in Temperature Control or TCR modes can be adjusted. Higher wattages allow the target temperature to be reached quicker, while lower wattages increase the time taken to reach the target temperature. Setting the wattage too low may prevent the target temperature from being

reached at all. To adjust the wattage in temperature control mode, quickly press the power button 4 times then use the left or right adjustment buttons to increase or decrease the maximum wattage. Press the power button once to confirm the wattage selection.

ADJUSTING TEMPERATURE

When in temperature control or TCR mode, use the left or right adjustment buttons to increase or decrease the temperature from 100°C – 315°C (200°F – 600°F). Lower temperature settings produce cooler and smaller clouds of vapour. Higher temperature settings produce hotter and larger clouds of vapour, setting the temperature too high can lead

to poor flavour or even a burnt taste. Experiment to find your favourite setting.

Note: The screen displaying “TEMP PROTECT” is not an error or fault; it means the atomizer head has reached or exceeded the set target temperature.

SWITCHING BETWEEN °C & °F

Press and hold down the right adjustment button to increase the temperature to the maximum of 315°C or 600°F, then press the right adjustment button once more.

The unit of measure will switch to Fahrenheit if previously in Celsius mode, or Celsius if previously in Fahrenheit mode. The same can be achieved by pressing and holding the left adjustment button.

SETTING TCR VALUES

TCR (temperature coefficient of resistance) settings allow atomizer heads made from coil materials other than those available in the “TEMP” mode to be used with effective temperature control. The arc evo allows 3 different TCR values to be pre-set as M1, M2 and M3. To set the temperature coefficient of resistance to match a particular coil material, switch the arc evo off by quickly pressing the power button 5 times, then press and hold down the power

and right adjustment buttons at the same time until the screen activates the TCR menu. Pressing the power button cycles between M1, M2 or M3 modes, pressing the left or right adjustment buttons increases or decreases the relevant TCR value. Leave the arc evo idle for 10 seconds to confirm your selection, then switch the arc evo back on.

Refer to the table on the next page for a list of TCR estimates of the most common types of wire used in temperature controlled vaping.

Material	TCR Value Range
Nickel	600 - 700
NiFe	300 - 400
Titanium	300 - 400
SS (303, 304, 316, 317)	80 - 200

Note: The TCR value displayed is 10^5 (100,000) times greater than the actual TCR value in standard units of K^{-1} . TCR settings are not generally required for standard coil material.

If using standard nickel, titanium or 316 stainless steel coils, TCR settings will not have any advantage over the standard temperature control settings.

PROTECTIONS

SHORT CIRCUIT PROTECTION

If an atomizer short circuit occurs, the screen will display “Atomizer Short” and the arc evo will not provide power to the atomizer or produce any vapour. Replacing the atomizer head should allow normal operation to resume. To replace the atomizer head follow the steps outlined in **Replacing The Atomizer Head**.

NO ATOMIZER DETECTED PROTECTION

If no atomizer is detected, the screen will display “No Atomizer Found” and the arc evo will not provide power to the atomizer or produce any vapour. Ensure the atomizer head is fully screwed into the base of the tank, then fit the tank back onto the battery. If the “No Atomizer Found” message

continues, replacing the atomizer head should allow normal operation to resume. Follow the steps outlined in **Replacing The Atomizer Head**.

CLEANING AND MAINTENANCE

The arc evo battery and tank connection threads can be cleaned by wiping down with tissue or a dry cloth. The Slider 2 tank can be cleaned by removing it from the battery, unscrewing the tank base from the glass section of the tank then removing the atomizer head. The entire Slider 2 tank and base can

now be cleaned under hot running water. Allow the tank to fully dry before refitting the atomizer head into the tank base. Reassemble the tank.

Note: Do not attempt to clean the atomizer head with water. Do not submerge the arc evo battery unit in water or allow it to get wet.

SPECIFICATIONS

arc evo Battery

Dimensions: 42.0mm x 22.0mm x 132.5mm.

Weight: 182g.

Battery Capacity: 4400mAh
Integrated Battery.

Wattage Range: 1 – 60W.

Voltage Range: 0.5 – 9.0V.

Maximum Charge Current: 2.0A.

Maximum Tank Diameter: 22mm.

Thread Type: Spring Loaded 510
Connection.

Atomizer Resistance

Compatibility:

Wattage/Bypass > 0.1ohm –
3.5ohm.

Temperature Control/TCR >
0.05ohm – 1.5ohm.

Slider 2 Tank

Dimensions: 22.0mm Diameter x
52.5mm Length.

Weight: 46.8g.

Tank Capacity: 2.0ml.

Atomizer Type: ML/ML2.

Thread Type: 510 Connection.

Atomizer Head Resistance:
0.5ohm, 0.3ohm.

Airflow Type: Bottom – Bottom,
adjustable.

Maximum Refill Nozzle Diameter:
2.8mm.

KIT CONTENT

- 1 x arc evo battery
- 1 x Slider 2 tank
- 1 x Spare glass
- 1 x ML2 0.5ohm atomizer head (fitted)
- 1 x ML2 0.3ohm atomizer head (spare)
- 1 x QC USB Cable
- 1 x User manual
- 1 x Spare parts set

ADDITIONAL PRODUCT INFORMATION

There are no reported medical side effects with this product. If you believe you experience a side effect, please contact the manufacturer.

PRODUCT STORAGE AND BATTERY PRECAUTIONS

- Store the arc evo e-cigarette and its accessories away from children whilst not in use.
- Please only use the charging cable provided.
- Please dispose of dead batteries in accordance with your country's appropriate legislation.
- Do not charge the battery in a damp environment, or in temperatures under 0°C or above 45°C.
- Do not use the device in temperatures under -10°C or above 60°C.
- Do not carry batteries in a pocket or bag with other metallic objects.
- Do not attempt to repair a faulty arc evo battery as these are sealed units with no serviceable parts. Attempted repairs will void the warranty.

WARRANTY

arc evo components have a 28-day parts warranty with the exception of atomizer heads which are consumable items and are covered by our 'Dead on Arrival' warranty only. The USB cable supplied has a 12-month warranty. If any parts are found to be faulty within this time please contact our customer service team, whose details are on the back page of this booklet and we will arrange for a replacement. We may require the goods to be returned for further investigation.

PiLLbOX 38



Manufactured in China
under the authority
of Pillbox38 UK Ltd,
Stancliffe Street,
Blackburn, Lancashire,
BB2 2QR.



Tel 01254 692244
www.totallywicked.co.uk



Tel 1(888) 761-9425
www.totallywicked.com



Tel 0941-78447082
www.totallywicked.de