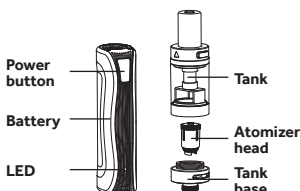


CONGRATULATIONS ON PURCHASING YOUR TOTALLY WICKED ARC PALM ELECTRONIC CIGARETTE KIT



USING YOUR ARC PALM

Priming the atomizer head

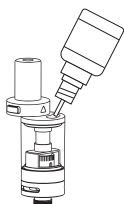
Note: It is important to "prime" a new atomizer head before first use. Failure to do so can cause the atomizer coil to overheat, leading to an unpleasant taste and sometimes irreversible damage to the atomizer head.

Remove the Slider CS Air tank from the arc Palm by unscrewing. Invert the Slider CS Air tank and unscrew the base. Drip a few drops of e-liquid on each of the four e-liquid inlets on the side of the atomizer head, and into its central hole to fully wet the wicking material.



Filling the tank

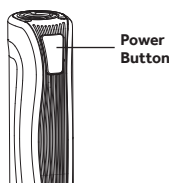
Press the button located on the side of the tank and slide in the direction indicated by the arrow, once opened fill the tank, leaving an air gap of approximately 2mm above the fluid to avoid air locks or flooding. Once filled, slide the tank shut and the button will depress, locking the tank.



Note: After priming a new atomizer head and filling the tank, it is recommended to wait 5 minutes to ensure the atomizer head is fully saturated.

Power on and off

Press the power button 5 times quickly to turn the arc Palm on. To turn the device off, press the power button 5 times.



Vaping

Press and hold the power button as you inhale the vapour. The LED will illuminate while the power button is held down to vape.

Battery level indication

Approximately one second after the power button is released, the LED will relight to show the battery's approximate remaining charge as detailed in the table below.

Battery Level	100%-60%	59%-30%	29%-10%	9%-0%
LED Colour	Green	Orange	Blue	Red

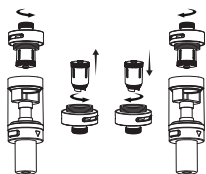
Charging the battery

To charge the battery, connect the charge lead into the USB port. The LED on the front of the arc Palm will glow red and simultaneously flash 5 times in green when the charge lead is first connected. Once charging, the LED will continue to glow red until fully charged, at which point it will turn off.



Changing the atomizer head

To change the atomizer head in the Slider CS Air tank, remove the tank from the arc Palm by unscrewing. Invert the tank and unscrew the base. Remove the atomizer head from the base by unscrewing, and insert a new atomizer head. After fitting a new atomizer head, remember that it will need priming as described in the section "Priming the atomizer head".



Adjustment of airflow:

To adjust the airflow to your personal preference, rotate the airflow control ring located at the bottom of the tank. The more area exposed behind the slots in the airflow ring, the more open the air draw will be.

Short circuit protection

If a short circuit occurs before the power button is pressed, the LED will flash 3 times consecutively. If a short circuit occurs while the power button is pressed, the LED will flash 3 times consecutively. Replacing the atomizer head should allow normal operation to resume. Follow the steps outlined in 'Changing the atomizer head'.

Atomizer protection

If the power button is held down for longer than 15 seconds, the device will stop producing any vapour and the power LED will flash 10 times. After releasing the power button normal operation will resume.

Low voltage protection

If the battery voltage drops below 3.3V, the LED will flash 20 times and the device will power off. Charge the device via USB to power it back on.

Kit contents

1 x arc Palm battery
1 x Slider CS Air tank
1 x CS 1.5ohm atomizer head (fitted)
1 x USB cable
1 x User manual
Spare parts

Specifications:

Dimensions: 122mm x 24.0mm x 18.0mm
Battery capacity: 900mAh
Weight: 63g
Tank capacity: 2ml
Voltage Output: 4.2 – 3.3V
Output modes: Direct output with power limiting
Filling method: Sliding top fill with pushbutton catch
Airflow type: bottom adjustable
Tank diameter: 16.5mm
Atomizer Resistance Capability: 0.4ohm - 3.0ohm
Power Output: Maximum 30 watts
Maximum Filling Nozzle Diameter: 2.8mm

Additional product information

There are no reported medical side effects with this product. If you believe you experience a side effect, please contact the manufacturer.




Product Storage and Battery Precautions

- Store the arc Palm and its accessories away from children when not in use.
- Ensure the arc Palm is powered off when not in use.
- Avoid accidentally pressing the arc Palm power button when not in use.
- Please only use the charging cable provided.
- Please dispose of dead batteries in accordance with your country's appropriate legislation.
- Do not charge the batteries in a damp environment.
- Do not use the device when temperatures are outside the range -10 - 60°C.
- Do not charge the battery when temperatures are outside the range 0 - 45°C.
- Do not attempt to repair a faulty arc Palm as these are sealed units with no serviceable parts. Attempted repairs will void the warranty.

Warranty

The arc Palm components have a 28-day parts warranty, with the exception of Atomizer Heads, which are consumable items and covered by "dead on arrival" warranty only. The USB cable supplied has a 12-month warranty. If any parts are found to be faulty within this time please contact our customer service team, whose details are on the back page of this booklet and we will arrange for a replacement. We may require the goods to be returned for further investigation.

Manufactured in China under the authority of Pillbox38 UK Ltd, Stancliffe Street, Blackburn, Lancashire, BB2 2QR.

 Tel 01254 692244 www.totallywicked.co.uk
 Tel 1(888) 761-9425 www.totallywicked.com
 Tel 0941-78447082 www.totallywicked.de



TOTALLY WICKED®

